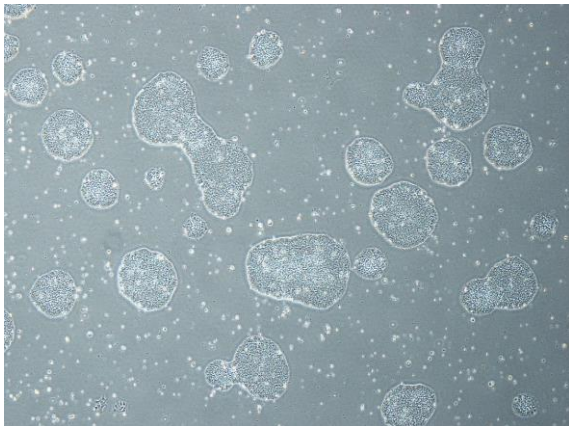
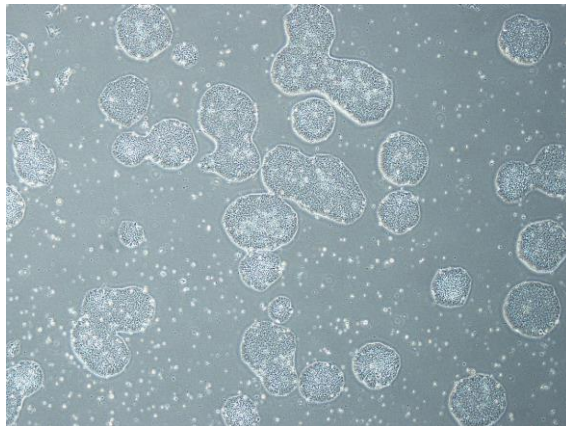


【 CiRA-j-1546 】 Morphology of iPSC colonies

CiRA-j-1546-A: passage-3



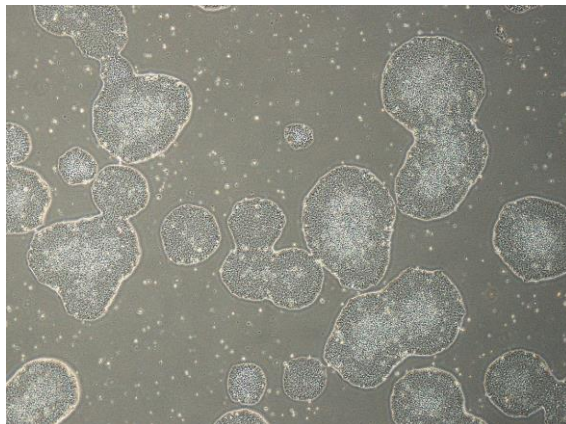
CiRA-j-1546-B: passage-3



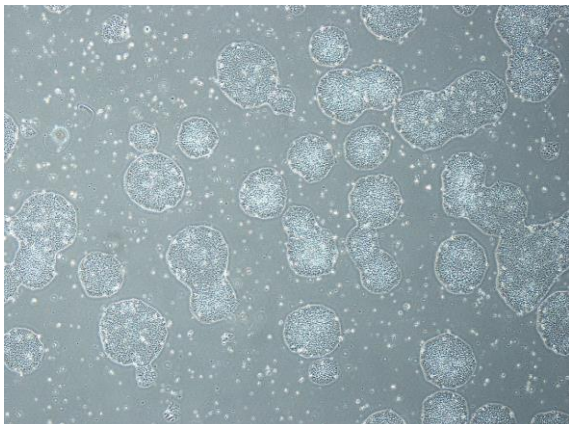
CiRA-j-1546-C: passage-3



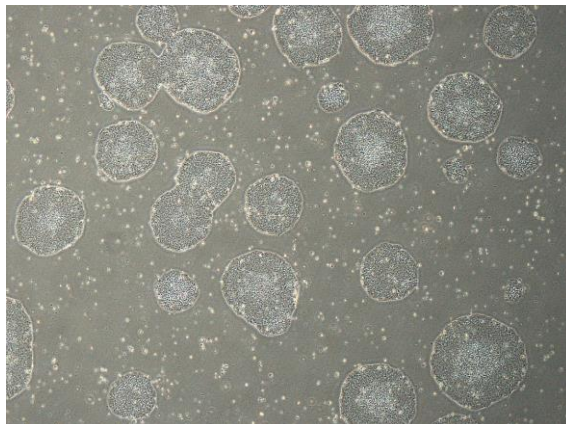
CiRA-j-1546-D: passage-3



CiRA-j-1546-E: passage-3



CiRA-j-1546-F: passage-3



(All images were captured at 4x magnification)